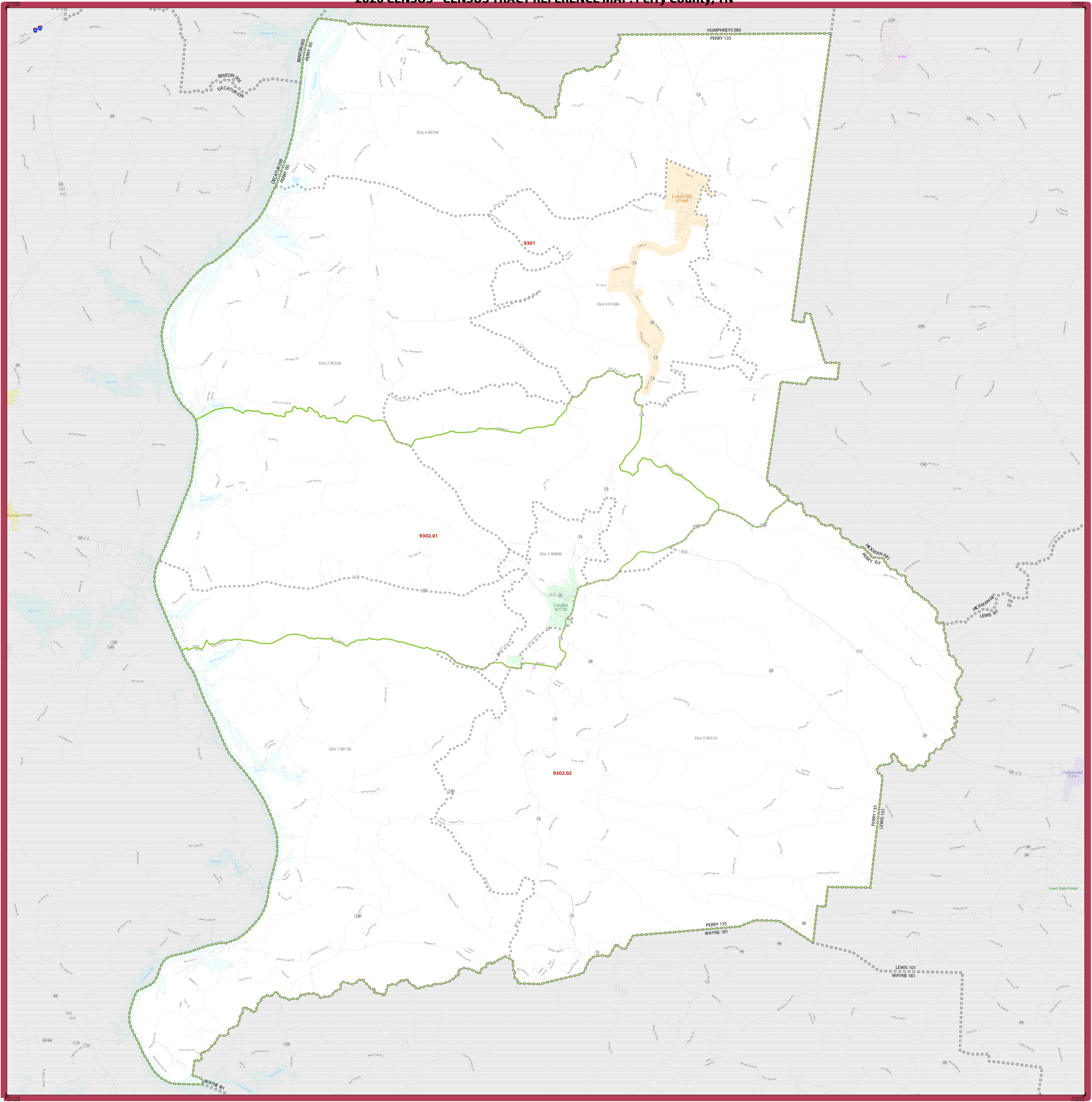


# 2020 CENSUS - CENSUS TRACT REFERENCE MAP: Perry County, TN



SYMBOL DESCRIPTION		SYMBOL		LABEL STYLE	
International	☆☆☆☆	CANADA	☆☆☆☆	Davis 18100	
Federal American Indian Reservation	■■■■■■■■■■	L'ANSE RESVN 1880	■■■■■■■■■■	Incline Village 35100	
Off Reservation Trust Land	■■■■■■■■■■	T1880	■■■■■■■■■■	33.07	
State American Indian Reservation	■■■■■■■■■■	Tama Resvn 9400	■■■■■■■■■■		
Alaska Native Regional Corporation	▼▼▼▼▼▼	NANA ANRC 52120	▼▼▼▼▼▼		
State (or statistically equivalent entity)		NEW YORK 36			
County (or statistically equivalent entity)	□□□□□	ERIE 029	□□□□□		
Minor Civil Division (MCD) <sup>1</sup>	○○○○○○	Bristol town 07485	○○○○○○		
Census County Division (CCD), Census Subarea (CSA), or Unincorporated Territory (UT)	○○○○○○	Hanna CCD 91650	○○○○○○		
Consolidated City	○○○○○○	MILLFORD 47500	○○○○○○		
Incorporated Place 1,2	■■■■■■■■■■		■■■■■■■■■■		
Census Designated Place (CDP) <sup>3</sup>	■■■■■■■■■■		■■■■■■■■■■		
Census Tract <sup>3</sup>	■■■■■■■■■■		■■■■■■■■■■		
DESCRIPTION	SYMBOL	DESCRIPTION	SYMBOL	DESCRIPTION	SYMBOL
Water Body	Blue wavy lines	Interstate or U.S. Highway	Blue line with shield	Inset Area	Blue box with 'A1'
College or University	Blue dashed line	State Highway or State Road	Blue line with shield		
Military	Blue dashed line	Other Road	Blue line		
Prison or Juvenile Detention Center	Blue dashed line	4WD Trail, Stairway, Also, Walkway or Ferry	Blue dashed line		
Navigable Boundary or Feature Not Elsewhere Classified	Blue dashed line				
Natural or State Park, Forest, or Recreation Area	Green wavy lines				
Outside Subject Area	Grey box				

Where international, state, county, and/or MCD/CCD boundaries coincide, the map shows the boundary symbol for only the highest-ranking of these boundaries.

Geographic area names are followed by their FIPS or census code.

1. A "\*" following an MCD name denotes a false MCD. A "\*" following a place name indicates that a false MCD exists with the same name and FIPS code as the place; the false MCD label is not shown.

2. Place label color corresponds to the place fill color.

3. Census tracts are identified by an up to four-digit integer number and may have an optional two-digit suffix for example 23 or 1457.02. The census tract codes consist of six digits with an implied decimal between the fourth and fifth digit corresponding to the basic census tract number, but with leading zeros, and trailing zeros for census tracts without a suffix. The tract number examples above would have codes of 002300 and 145702, respectively.

Due to space limitations, some road names, along with other feature and geography names on the map, may not be shown.

All legal boundaries and names are as of January 1, 2020. The boundaries shown on this map are for Census Bureau statistical data collection and tabulation purposes only; their depiction and designation for statistical purposes does not constitute a determination of jurisdictional authority or rights of ownership or entitlement.

Geographic Vintage: 2020 Census (reference date: January 1, 2020)  
 Data Source: U.S. Census Bureau's MAJ/TIGER database (TAB20)  
 Map Created by Geography Division, January 06, 2021

Projection: Albers Equal Area Conic  
 Datum: NAD 83  
 Spheroid: GRS 80  
 1st Standard Parallel: 35 16 28  
 2nd Standard Parallel: 36 23 50  
 Central Meridian: -85 58 43  
 Latitude of Projection Origin: 34 59 38  
 False Easting: 0  
 False Northing: 0

Scale: 1:153,119

Sheet 1 of 1 PARENT sheets  
 Total Sheets: 1 (Index 0; Parent 1; Inset 0)  
 NAME: Perry County (135)  
 ENTITY TYPE: County or statistically equivalent entity  
 ST: Tennessee (47)

2020 CENSUS TRACT REF MAP (PARENT)  
 Sheet ID: 249547135001

U.S. DEPARTMENT OF COMMERCE U.S. Census Bureau

